

Annual Members' Meeting

2014

Cardiology in east Kent Past and Future

Dr K Kamalvand MD FRCP FACC

Consultant Cardiologist

UCLTC

Urgent Care and Long Term Conditions Division
Treating every patient as we would care for a member of our family

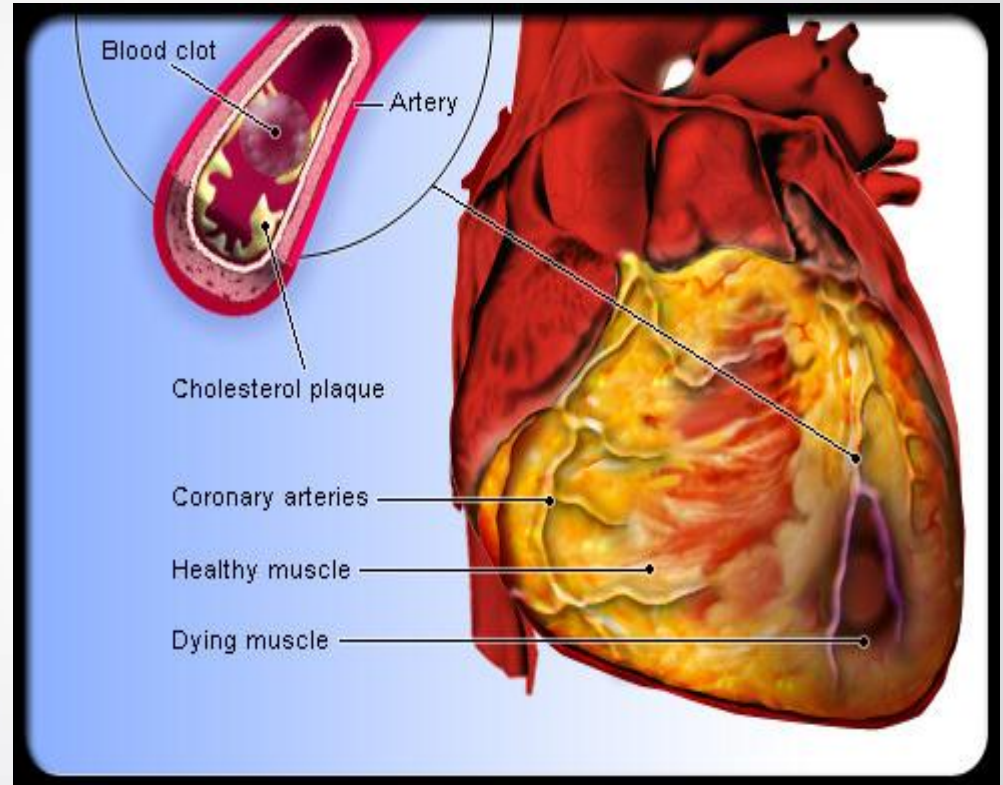
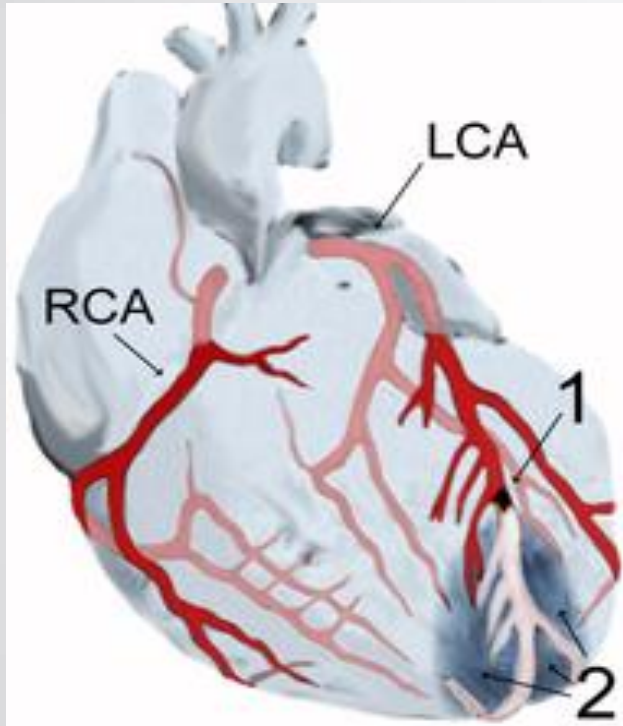


Putting patients first

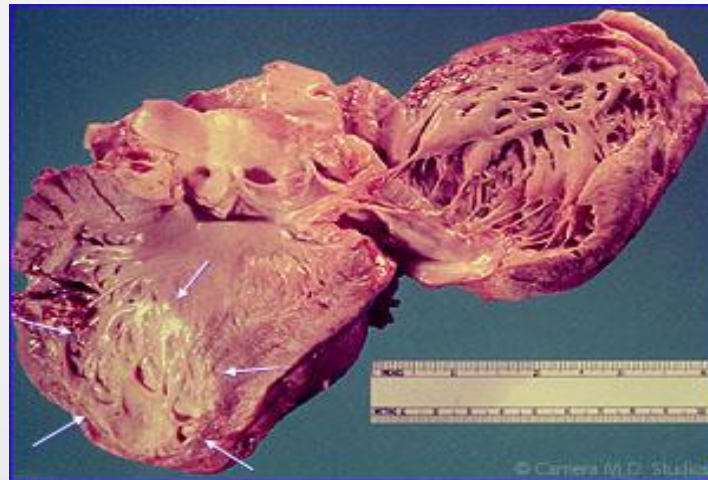
PPCI

- Case presentation and angiogram

Pathology

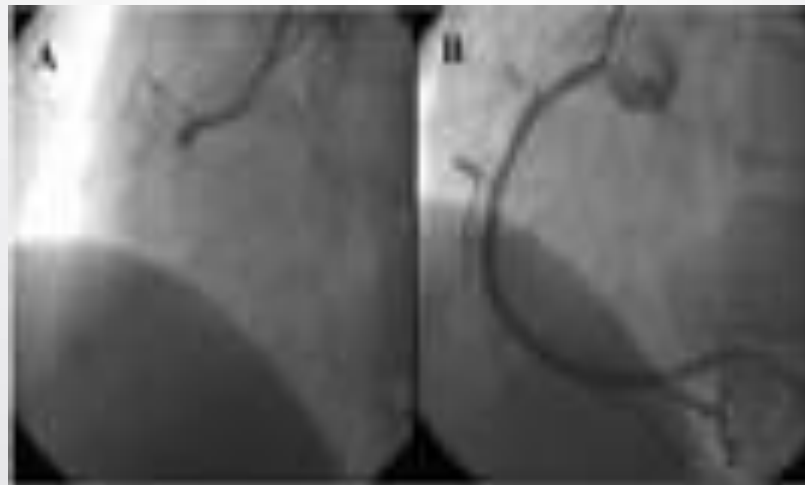
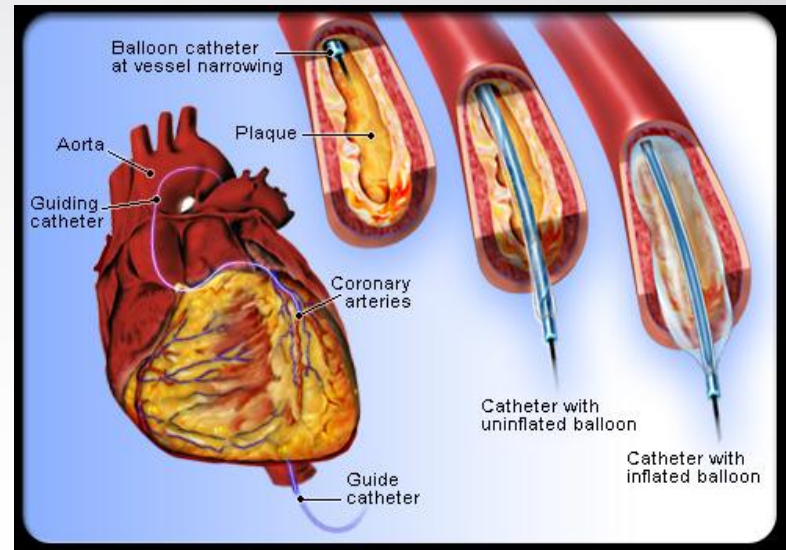
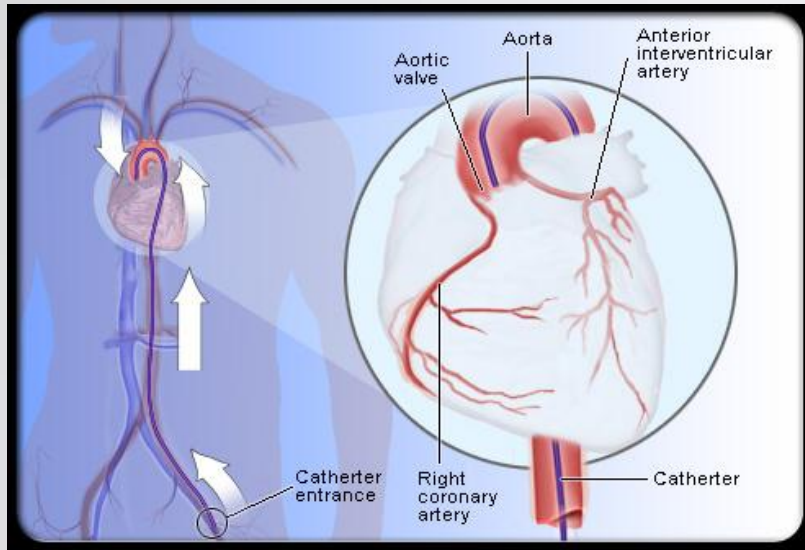


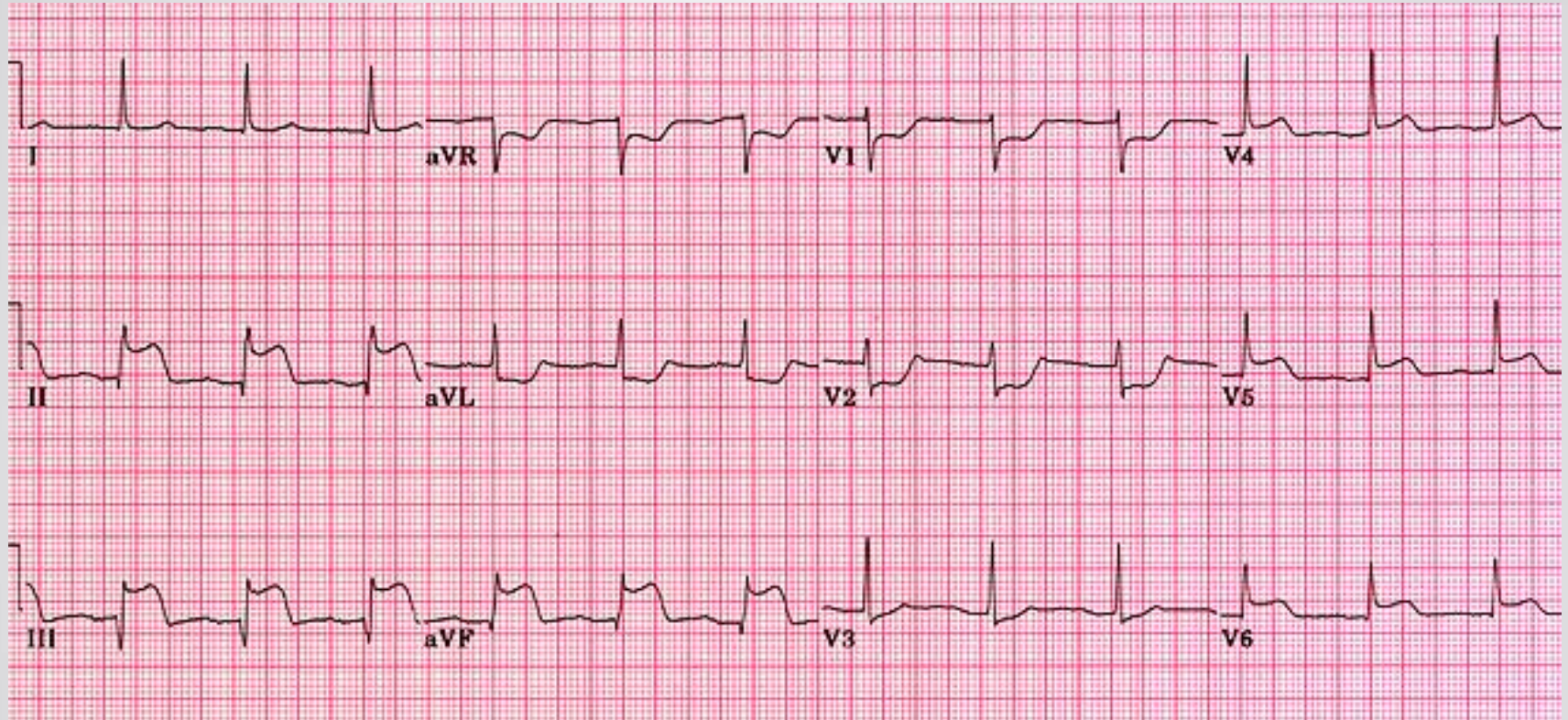




The arrows point to the site of a heart attack, where the heart muscle has died from oxygen deprivation. Normally, the area would look pink.







History

- 1998 - 2 cardiologist at WHH, 1 at QEQM and 1 at K&C
- Noninvasive cardiology
- Patients travelled to London for pacemakers, angiogram, cardiac surgery
- Waiting list 1 year!!

History

- 1998. Permanent pacemakers 40/year
- 2003. Cardiac catheter Lab, first dedicated Lab in Kent through lottery fund. Complex devices and ICD
- WHH chosen as site for Kent cardiothoracic unit but DoH changed its mind and instead catheter labs at QEQM, TW, Medway, and Dartford
- 2006. QEQM Lab with angiography and pacing
- PCI at WHH in 2006
- 2010. Heart attack unit and regional PPCI for Kent at WHH
- 2012/2013. EPS and RF ablation at QEQM and WHH

History

- Cardiology based wards
- Rapid access Chest pain clinics
- Dedicated community heart failure and arrhythmia nurses, cardiology GPs throughout east Kent trained and supported by secondary care
- Nurse led cardiac rehab and AF/cardioversion clinics
- New consultant appointments (5.2 at WHH, 2 KC, 4 at QEQM)
- CT angiography, stress echo

Near future

- 2 new consultants, EP at QEQM, Imaging at K&C
- Expand stress echo/CT angio/ nuclear medicine and EPS service
- Closer working with primary care with dedicated cardiology booking team
- 24/7 cover for other cardiology emergencies such as emergency pacing wires and echo
- Fully operational second angiography Lab at WHH increasing capacity and reducing inpatient waiting times for urgent angiogram/PCI
- Reduce waiting times for urgent surgical transfers to London
- More middle grade doctors and nurses

We have come a long way... It has been challenging!

- We can provide almost all cardiac services with the exception of cardiac surgery
- One of the busiest heart attack centres in UK covering a population of 1.4m
- From 0 to 600-700 pacemakers, 2000 angiogram and 1000 PPCI, 200 EPS/RF per year and expanding
- Waiting times reduced from years to weeks
- Better hospital and community services (GPSIs and nurses)
- Challenges remain but we have urgent plans with the intention of speedy conclusions