

EAST KENT HOSPITALS UNIVERSITY NHS FOUNDATION TRUST

REPORT TO: **BOARD OF DIRECTORS – 29 AUGUST 2014**

SUBJECT: **SINGLE TENDER WAVER BRIEF – SPENCER WING ACTIVITY**

REPORT FROM: **DIRECTOR OF FINANCE & PERFORMANCE
MANAGEMENT**

PURPOSE: **Decision**

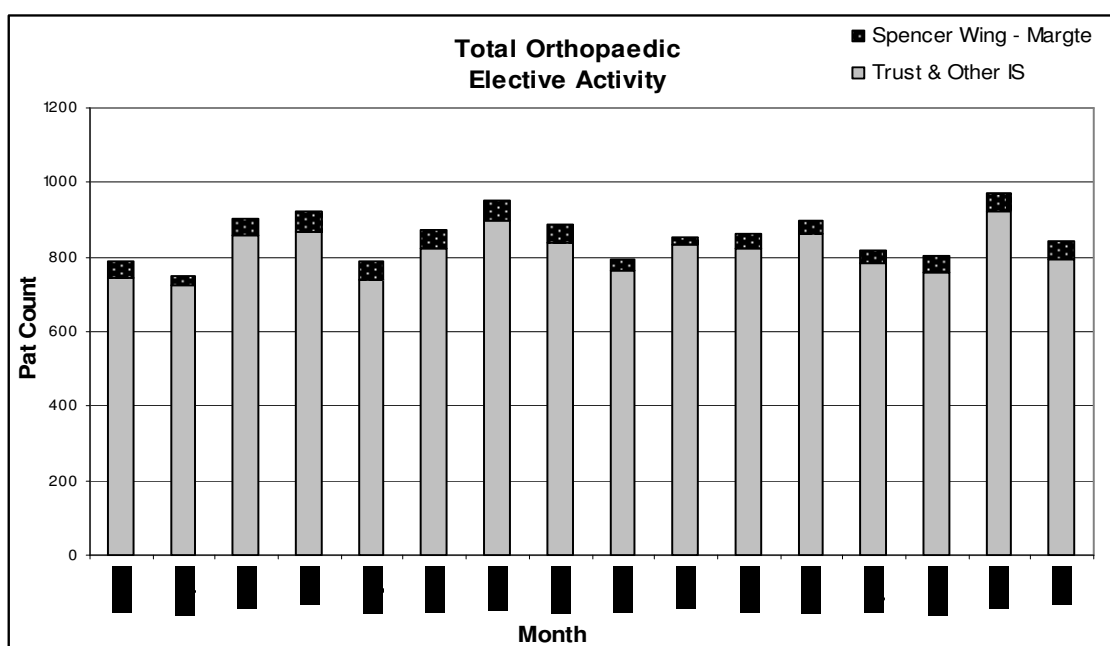
CONTEXT / REVIEW HISTORY / STAKEHOLDER ENGAGEMENT

A Single Tender Waiver (STW) request has been submitted for the current Orthopaedic NHS work sent to the Spencer Wing - Margate. The STW estimated value is £1,370,668 for activity carried out in 2014/15. The value for is based on the activity sent to Spencer Wing in the previous financial year and is within the Surgical Division's Plan for 2014/15. It was recommended for approval by the Finance & Investment Committee.

SUMMARY:

The Orthopaedic elective service is under significant pressure from rising demand. In order to sustain the current activity levels and manage waiting times there is a requirement for Orthopaedics to carry out additional activity through other providers. The Spencer Wing is the main provider for the elective Independent Sector work. The level of primary care referrals from April 2014 have risen by >30% and are now are 50% over plan based on July data. Therefore to ensure patient care and pathways are not compromised it is necessary to use additional capacity in the Spencer Wing to support the service delivery.

The graph and table below show the level of Orthopaedic elective inpatient activity by month with the Spencer Wing activity highlighted.



	Apr-13	May-13	Jun-13	Jul-13	Aug-13	Sep-13	Oct-13	Nov-13	Dec-13	Jan-14	Feb-14	Mar-14	13/14
Trust & Other IS	742	724	858	867	738	823	898	838	765	835	823	861	9772
Spencer Wing - Margate	48	27	44	55	49	49	56	49	28	19	41	35	500
Total Elective Activity	790	751	902	922	787	872	954	887	793	854	864	896	10272

	Apr-14	May-14	Jun-14	Jul-14	14/15 YTD
Trust & Other IS	781	758	924	791	3254
Spencer Wing - Margate	36	45	47	51	179
Total Elective Activity	817	803	971	842	3433

The activity is costed at tariff and therefore a pass through cost for the Division.

IMPACT ON TRUST'S STRATEGIC OBJECTIVES:

The level of primary care referrals from April 2014 have risen by >30% and are now are 50% over plan based on July data. Therefore to ensure patient care and pathways are not compromised it is necessary to use additional capacity in the Spencer Wing to support the service delivery.

FINANCIAL IMPLICATIONS:

The estimated value of the STW is £1,370,668 and is included in the Surgical Services Division's budget for 2014/15.

LEGAL IMPLICATIONS / IMPACT ON THE PUBLIC SECTOR EQUALITY DUTY:

N/A

PROFESSIONAL ADVICE TAKEN ON ANY NOVEL OR CONTENTIOUS ISSUES

N/A

BOARD ACTION REQUIRED:

- (a) Approve the STW