

DOVER HOSPITAL 01 - Introduction



East Kent Hospitals University NHS Foundation Trust welcomes you to this exhibition of the plans for the new Dover Hospital. We have included artist's impressions of what the building will look like, floor plans, lists of services we will be providing, transport plans and the construction plan.

We have also provided you with the opportunity to give us your views. There are questionnaires for you to complete on the table, or if you prefer you can complete it online by visiting: <http://www.ekhuft.nhs.uk/dover/>

The Trust's mission is 'To provide safe, patient focused and sustainable health services with and for the people of Kent. In achieving this, we acknowledge our special responsibility for the most vulnerable members of the population we serve'.

Forthcoming changes to the Health Service will mean that local GPs will have more say in how services are provided, and they have formed Clinical Commissioning Groups (CCG) to carry out this work. Eastern and Coastal Kent Primary Care Trust and the recently formed CCG's have been explicit in their continued intent to commission locally-provided, quality, acute hospital services for the people of Dover district. The local Commissioners have been working closely with EKHUFT to plan for the future health needs for this area.

The Trusts' aims are to provide around 85% of all outpatient services for Dover district from healthcare facilities located in Dover. The future facilities are to include a wide range of co-located diagnostic services as well as renal dialysis services, child health ambulatory services and minor injuries services.

The local CCG's have been involved with the planning of the proposed developments at Dover. During the summer of 2012, the Trust met with the CCG lead for the Dover and Deal locality to share the plans for the new Dover site. Those plans were well received. The plans were also well received by the CCG representative from the Swale locality. The Trust will continue to involve the local CCG representatives throughout the remainder of the planning process.

The following clinical departments are to be provided in the new Hospital:

- Minor injuries unit;
- Physiotherapies department (all adult therapy services);
- Activities of Daily Living (ADL);
- Renal Dialysis unit;
- Children's ambulatory care;
- Day hospital;
- Adult Ambulatory care provided by multi-disciplinary services to include medical treatment and procedure rooms;
- Pharmacy pod/ retail outlet;
- Maternity ante-natal and day care services;
- Radiology to support a 1 stop OPD model (plain x-ray and ultrasound)
- Hard standing for a Mobile MRI;
- Pathology point of care testing to support the 1 stop model;
- Health Records;

As well as meeting the needs of Commissioners, EKHUFT recognises its responsibility to ensure appropriate healthcare services are provided locally for the people of Dover district. These services will aim to meet the ever increasing and changing needs of the local population.

The commissioning intentions of the Dover and Aylesham consortium (published July 2008) give three primary areas of opportunity for improving healthcare in Dover and the surrounding area:

- Deliver more services locally in Dover;
- Improve accessibility of services which are delivered outside Dover; and
- Improve overall service performance and continuity of care.

The Outpatient department will provide outpatient services for:

- Anti Coagulant;
- Cardiology;
- Dermatology;
- Endocrinology;
- ENT (including Audiology for both adults and paediatrics);
- Orthotics;
- Gastroenterology;
- General Medicine and Colorectal;
- Maxillofacial Unit including Orthodontics;
- Ophthalmology;
- Pain Management;
- Phlebotomy;
- Respiratory;
- Rheumatology;
- Trauma and orthopaedics;
- Breast;
- Renal Haemodialysis;
- Women's Health (Gynaecology and Colposcopy);
- Health Care of the Older Person (HCOOP);
- Pre-assessment.



DOVER HOSPITAL 02 - The Buckland site

The new development will replace the current facilities of the existing Buckland Hospital, situated in the Coombe Valley area of Dover.

The hospital site is on the south side of Coombe Valley Road and has extensive frontage onto the road with numerous access points from it. It faces terraced housing on the north, east and west sides and is in the vicinity of a number of shops/convenience stores.

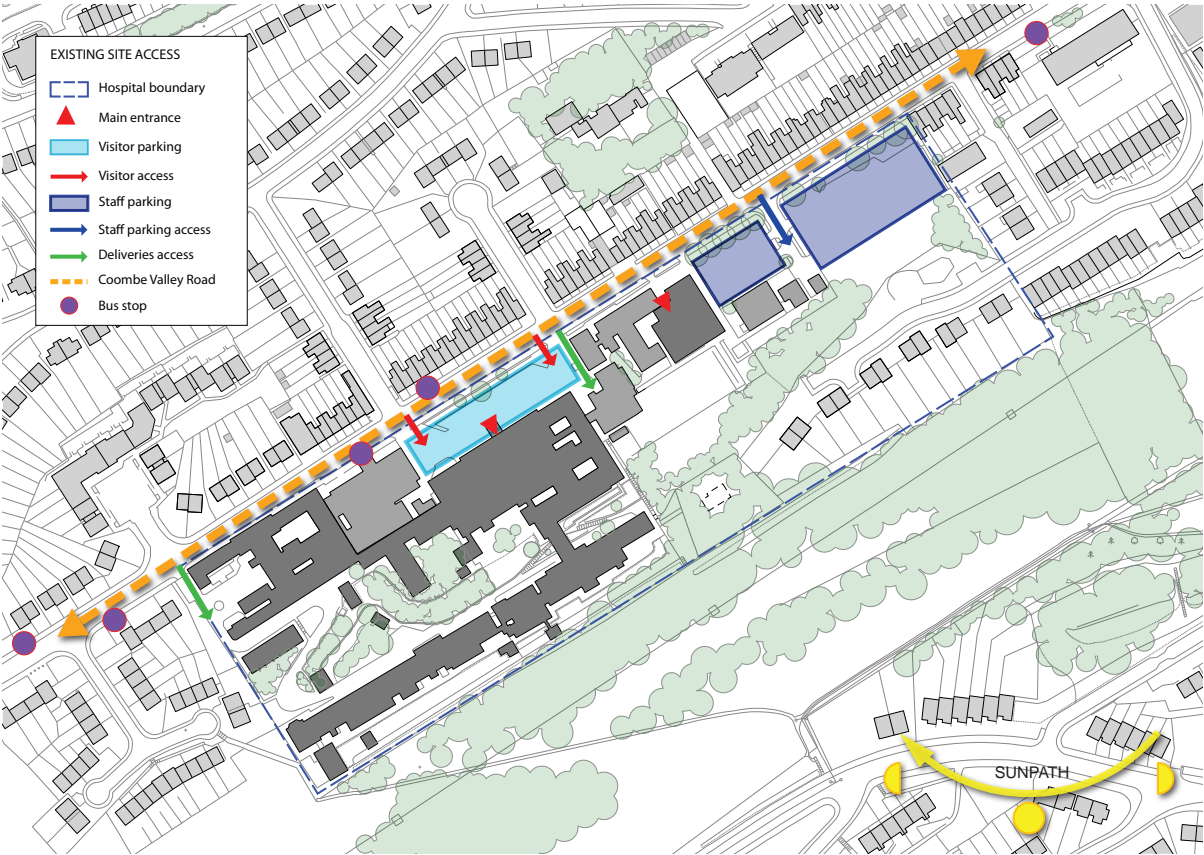
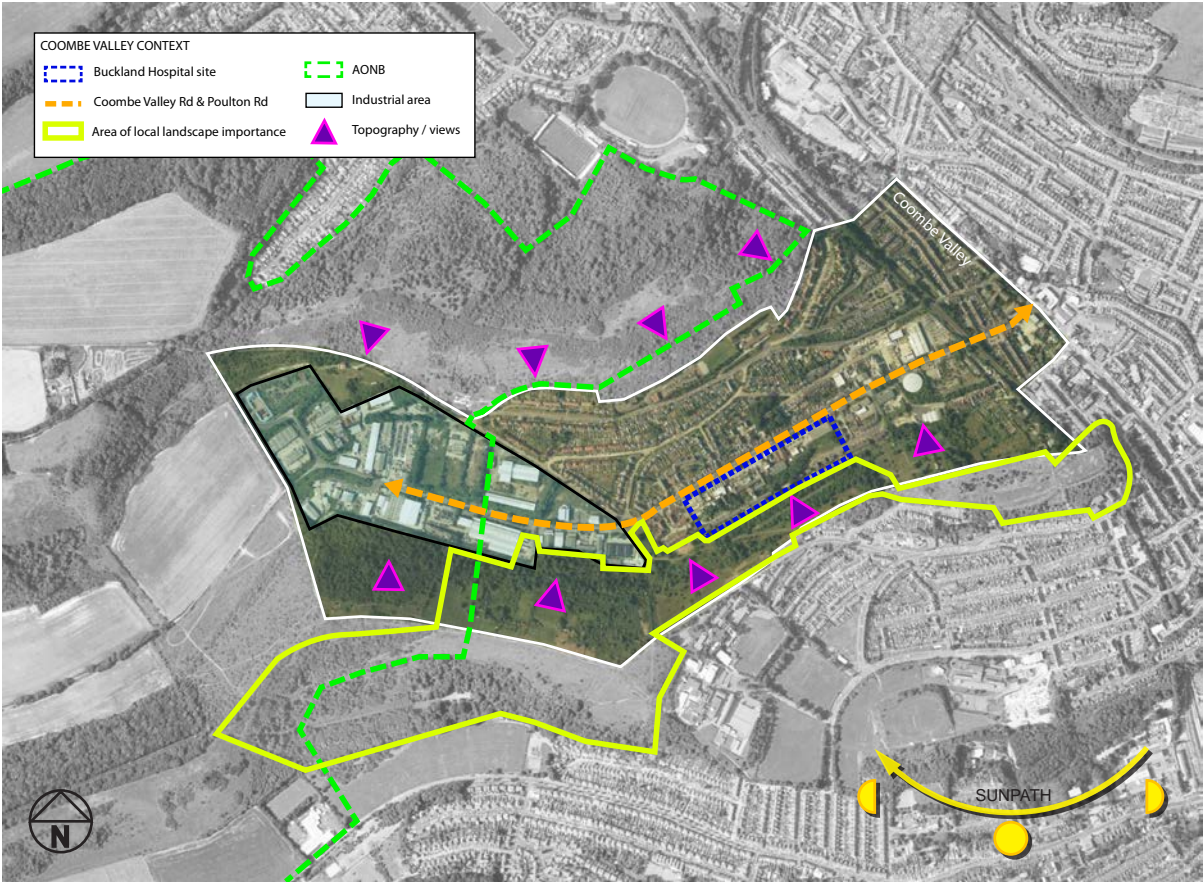
The south side of the site is occupied by a steep wooded embankment, and further back a designated Area of Local Landscape Importance. Coombe Valley is also located at the fringe of an Area of Outstanding Natural Beauty located beyond the housing on the opposite side of the road, visible from the proposed site.

Coombe Valley Road constitutes the main access route to the Coombe Valley Industrial Estates and other local businesses.

In 1835 the site of the present hospital was selected for the new Dover Union Workhouse. Opened on 29 September 1836, the workhouse was constructed to the courtyard plan devised by Sir Francis Head and designed to accommodate 500 inmates. Infirmary blocks, a children's block and a chapel were added in the nineteenth and twentieth century. These buildings still survive but the main building was reconstructed in the 1920s or 1930s.

At this time the road leading to the workhouse was known as Union Road. The name was changed to Coombe Valley Road in 1964. The building was known as the Dover Union Workhouse Infirmary to 1930, it then became the Dover Institution up to 1943, and was then known as the County Hospital. In 1948 it became Buckland Hospital.

The hospital has been modified and extended in the decades since, culminating with the Physiotherapy building in the 1980s.



Existing site photographs



DOVER HOSPITAL 03 - Site proposal - pre-construction works

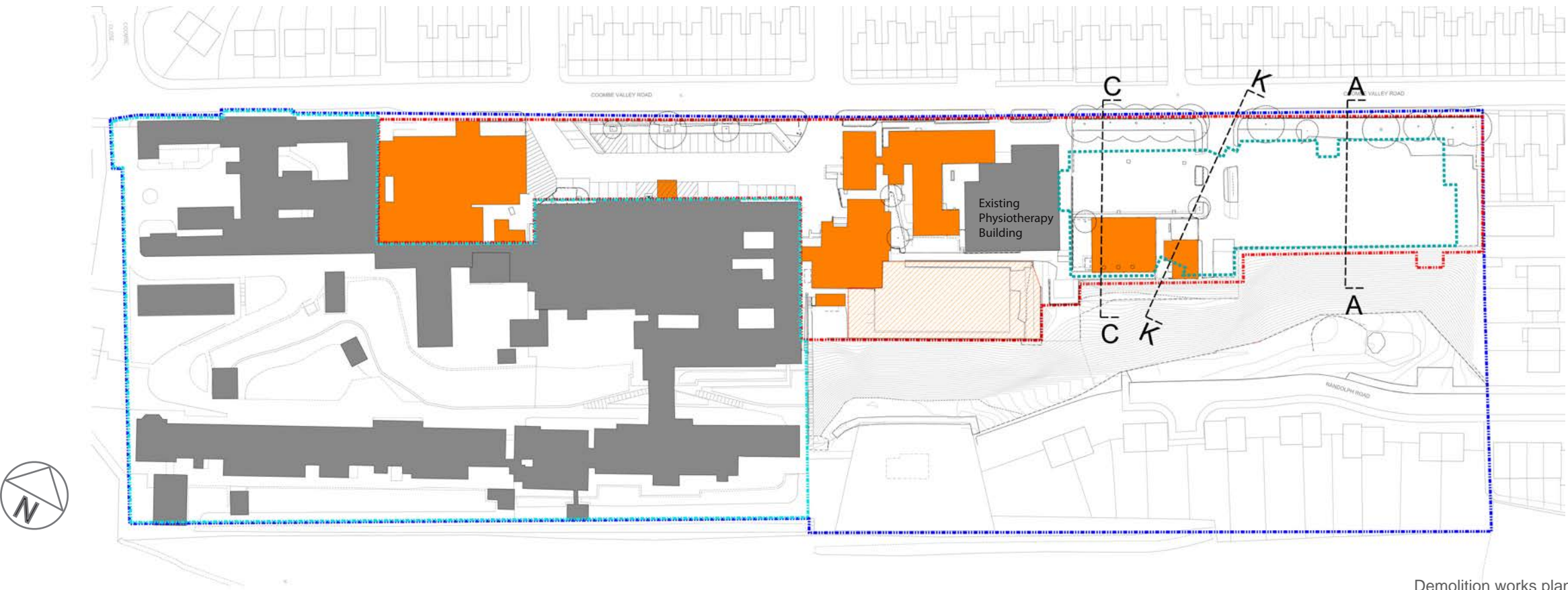
Demolition works will start early in the new year to make space for the new development. Site hoarding will be erected around the site.

Most of the existing facilities are to remain in use throughout the construction of the new building, which will be located on the current staff car park on the eastern part of the site. The existing Physiotherapy facilities will be temporarily moved into the main building to enable early demolition works to commence.

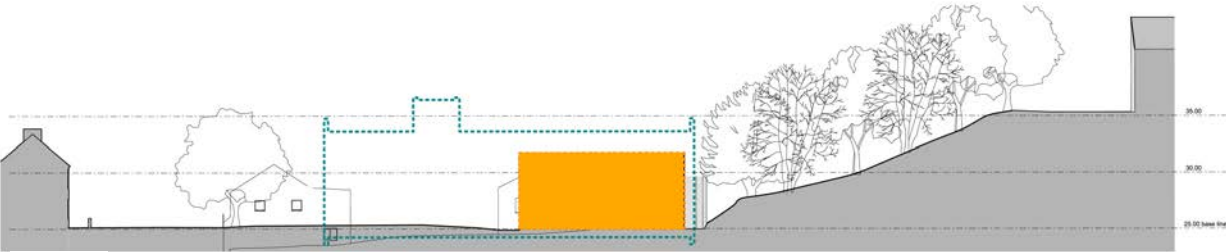
Other existing facilities will be demolished and replaced with a new staff and visitor car park and service yard.



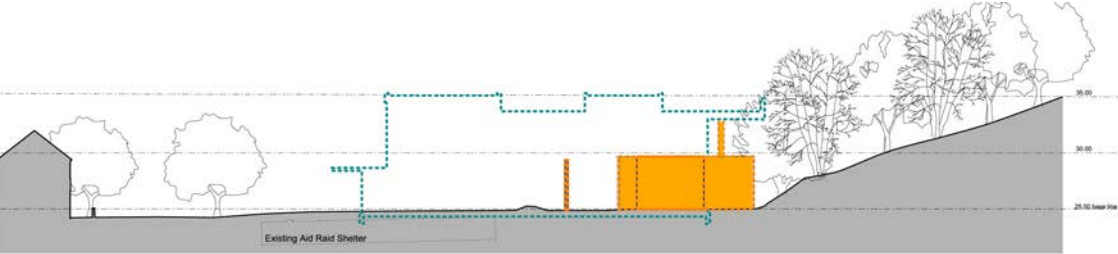
Existing site photographs



Demolition works plan

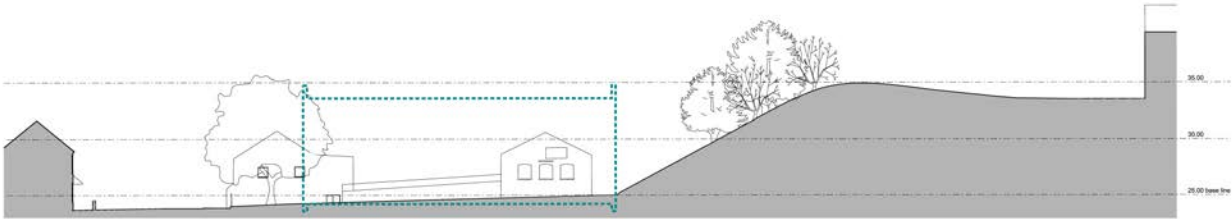


Existing site section CC



Existing site section KK

KEY:	
	Site Boundary
	Ownership Boundary
	Surplus land for development
	Retained Structures
	Existing concrete slab - to be removed
	Existing buildings to be demolished
	Proposed new building



Existing site section AA

DOVER HOSPITAL 04 - Site proposal - access and parking



View of the new entrance

The site is located on Coombe Valley Road, 1.4 miles from Dover town centre and 1.4 miles from Dover Priory train station. This provides easy access for public and staff using existing bus, rail and cycle networks.

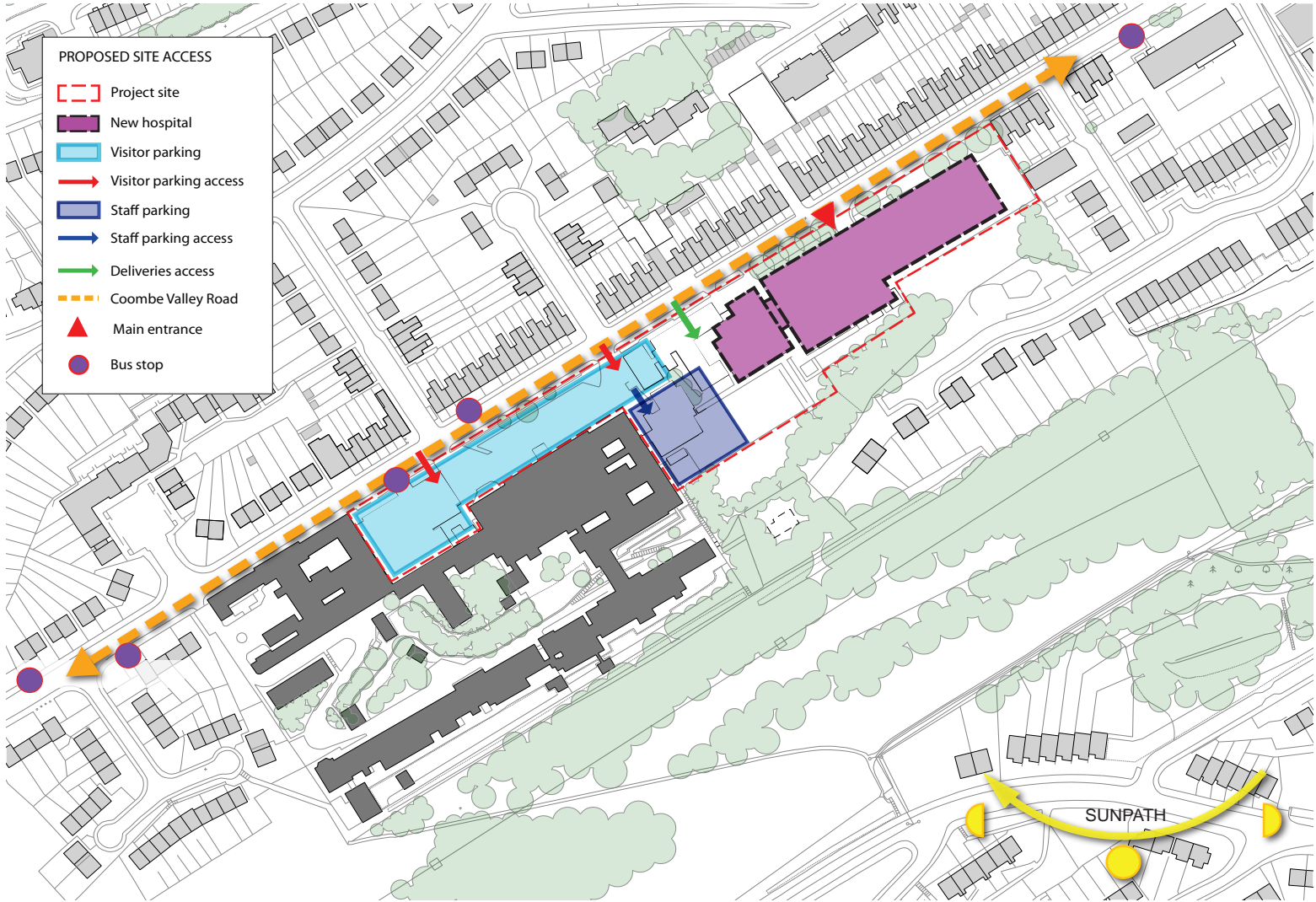
Coombe Valley Road has good bus links to the centre of town and the train station, and is located on the number 60 bus route, operated by Stagecoach. The nearest bus stop is St Radigunds, which stops opposite the site three times an hour.

Dover has several district cycle ways, which include the Miners Way, Skylark Trail and Sandwich Way. The nearest route is Route 17, which leads to Folkstone via West Hougham and Hawkinge. Safe and conveniently located cycle parking facilities will be provided off the main entrance of the building for visitors.

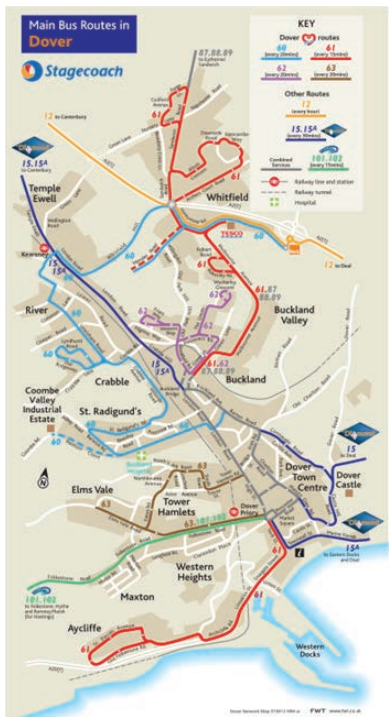
The existing vehicular access to the site off Coombe Valley Road has been modified to suit the layout of the new development. A public drop off bay will be located adjacent to the main entrance, while parking will be located to the west part of the site. Ambulance and delivery access will be at the rear of the building, within a secure and restricted area. The anticipated number of parking spaces provided is currently shown as 158, including 10 parking bays designated for disabled people.

Taking note of all existing guidance the following key issues have been addressed in regards to access:

- The building has been designed with an identifiable main entrance which is easily accessible from both the main car parking and the drop-off area via level paths.
- The main pedestrian and cycle route has been designed to be the most direct route for staff and visitors using public transport.



Proposed access & parking diagram



Stagecoach main bus routes in Dover

Green Transport Plan

East Kent Hospitals University NHS Foundation Trust recognises that travel and transport are determinants of health and aims, with the cooperation of staff partners and service providers, to actively promote and improve the health and wellbeing of the workforce and community through making available and encouraging the use of greener travel options'

Targets:

- Ensure our staff and our key stakeholders are aware of our travel plans
- Reduce the amount of meetings where travel is needed by 50%
- Increase the numbers of people registered with the liftshare (Kentjourneyshare.com) database by 80%

Actions:

- Increase awareness of our travel plans both within the organisation and with partners
- Enable more remote and home working as an option for staff
- Promote the national liftshare (Kentjourneyshare.com) car share scheme and database
- Implement options to encourage other modes of transport instead of the car, making other modes more viable
- Carry out regular checks on bike use and promote a cycle to work scheme
- Work with Local Authority to improve public transport access to sites
- Make use of the travel grants available from the County Council for items such as cycle storage, purchase of pool bike / moped and shower / changing facilities



DOVER HOSPITAL 05 - Site proposal

The building form has been constrained by the long, narrow shape of the available site.

The design allows a clear separation between operational zones / departments, maximises the potential for accommodation over two storeys, provides a clear identity for the main entrance and assists wayfinding.

The building is split into three blocks, separated by two areas of vertical glazing to break its mass in elevation. One will form the entrance atrium and will be glazed to allow full transparency and pleasant views over the southern woodland area at the rear.

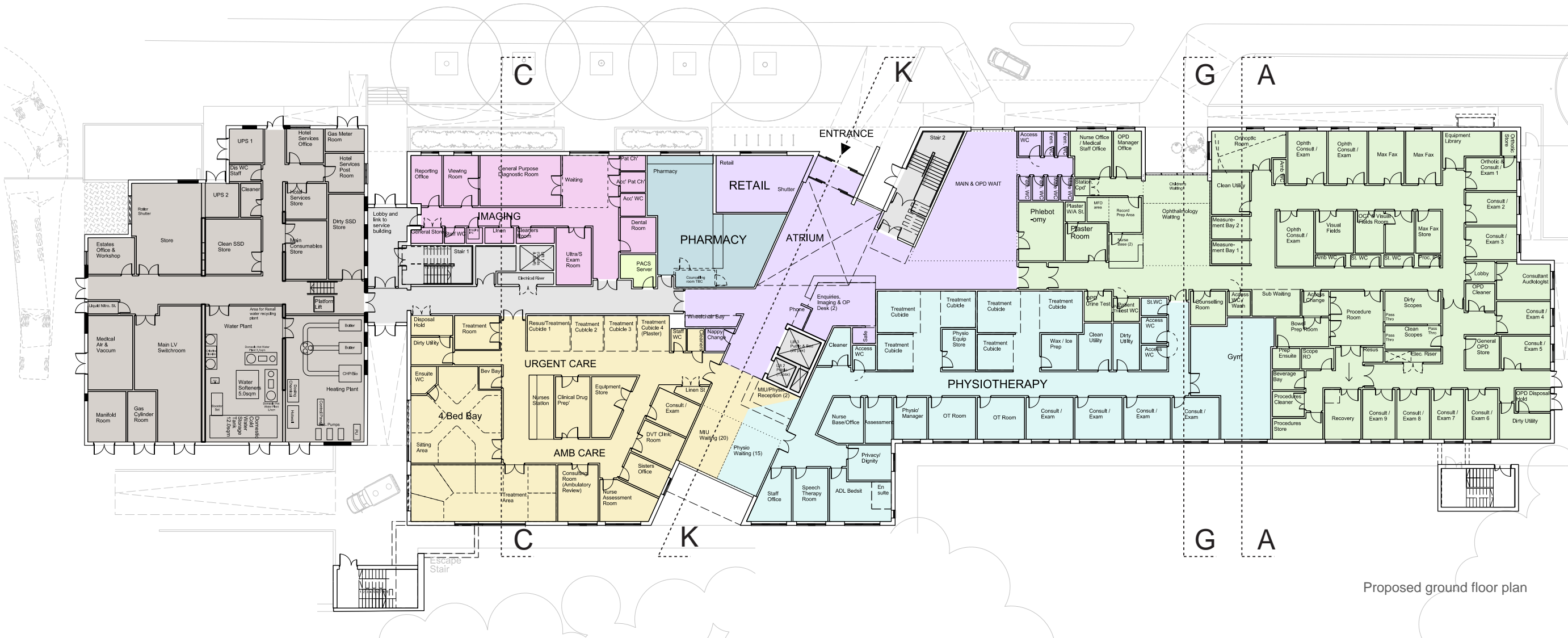
The overall height and scale of the atrium will also contribute to creating a transitional space between the exterior and interior, as well as forming a welcoming and pleasant entrance space.



Aerial view of building

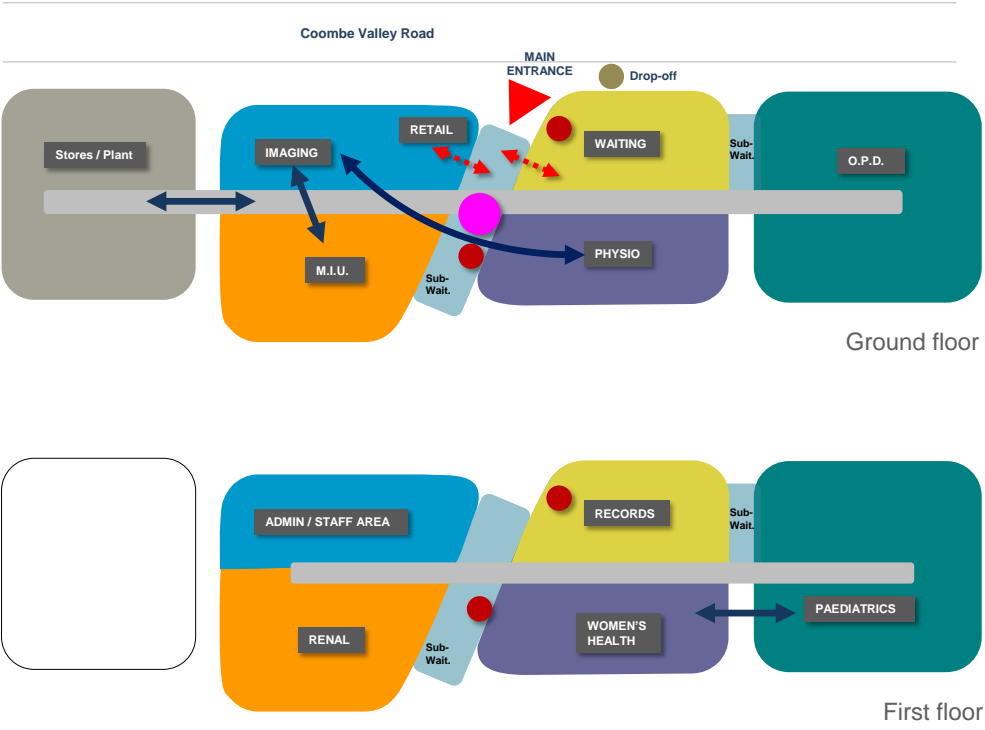
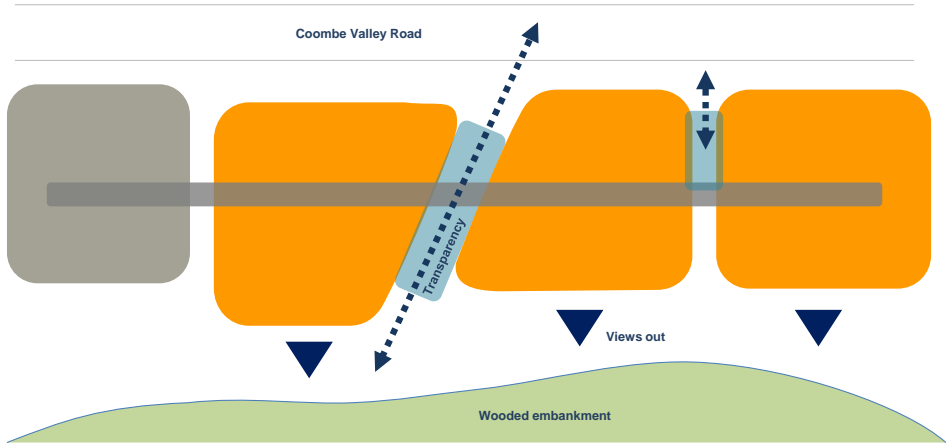


DOVER HOSPITAL 06 - Building design



Proposed ground floor plan

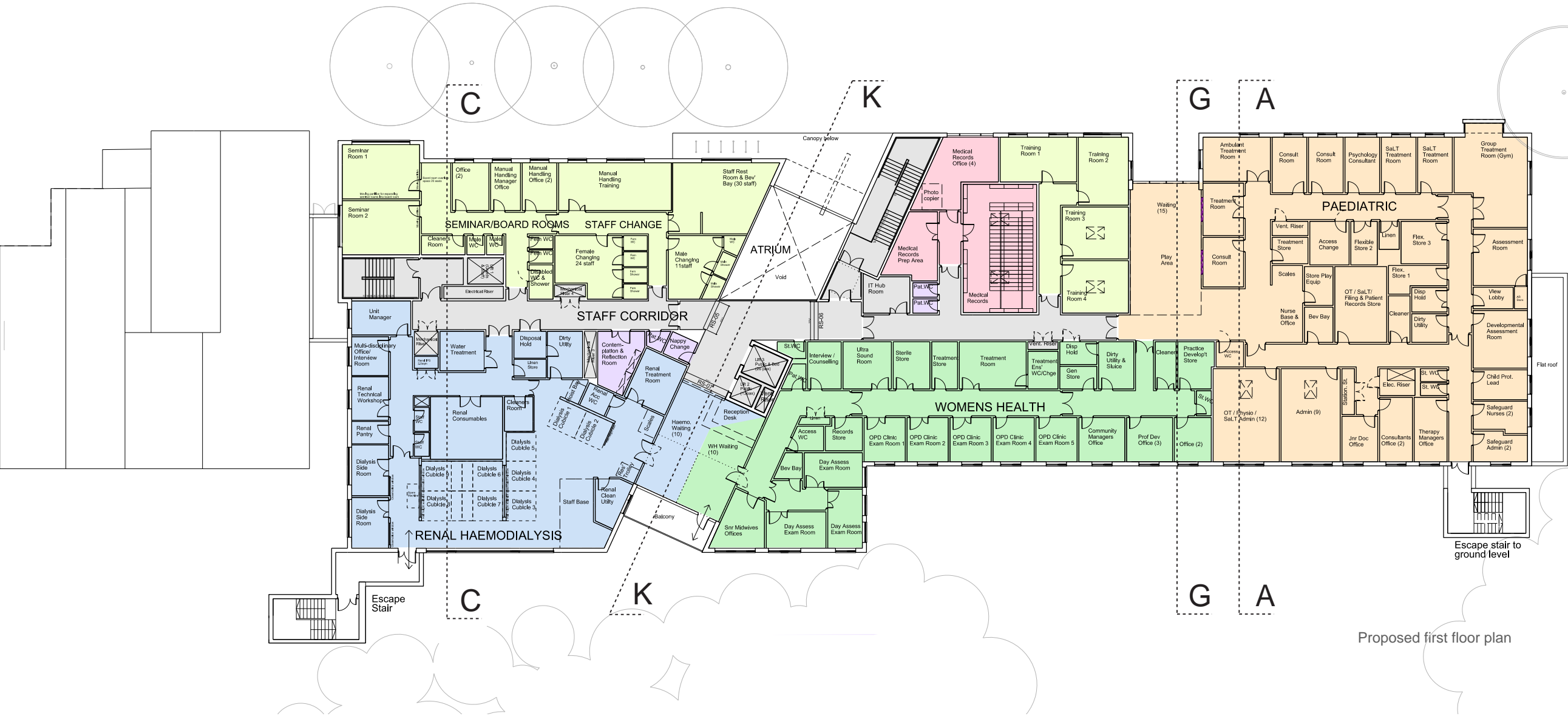
General concept diagram



Functional diagrams



DOVER HOSPITAL 07 - Building design



Proposed first floor plan



Proposed section CC



Proposed section KK



Proposed section GG



Proposed section AA

Department Key:

- Imaging
- Minor injuries unit
- Outpatient department and procedures
- Paediatric unit
- Physiotherapy
- Renal dialysis unit
- Women's health
- Pharmacy
- Public space and retail
- Administration and staff facilities
- Medical records
- Circulation and plant spaces
- Facilities management



East Kent Hospitals University NHS Foundation Trust

NIGHTINGALE associates

DOVER HOSPITAL 08 - External fabric and appearance



View of the new street elevation



Proposed street elevation



Proposed south elevation



Black brick



Timber laminated panels



Fibre cement panels



View of main entrance

The external materials have been selected for their attractive appearance and to meet the criteria of robustness, sustainability and longevity. The proposed hospital is also viewed as a public building and the choice of materials is appropriate to a building of this type, rather than reflecting the surrounding predominately residential area.

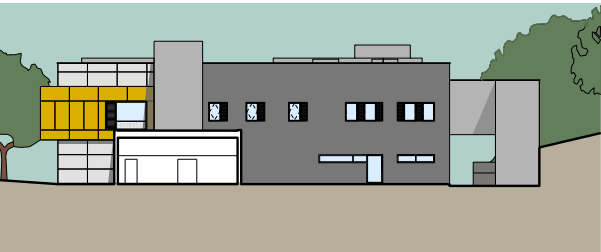
External walls will use a range of materials where black brick and through-coloured render will serve as a background for two types of cladding panels. These are white fibre cement panels and timber laminated panels manufactured from kraft paper and finished with natural timber veneers. The dark colour of the brick is used as a medium to enhance the crisp lines of the bright cladding as well as the shape and colours of the wooded bank at the rear of the building.

The chosen materials will resonate with the great contrast between the urban and natural environment in which the building is set in. The uniform colour of the brick and render, and the regularity of the cladding panels will contrast with the more organic appearance of the timber boards.

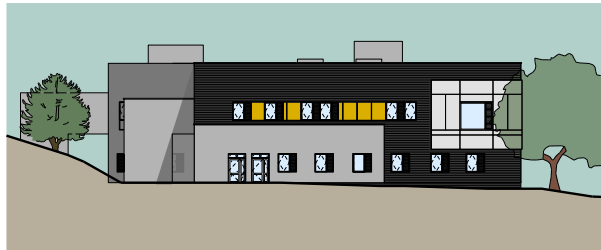
The new development offers an opportunity to provide a modern healthcare facility that matches the aspirations of the 21st century NHS and create a uniform and contemporary frontage to the road that should participate in the improvement of the urban environment whilst serving the needs of the population.



View of the new street elevation



Proposed west elevation



Proposed east elevation